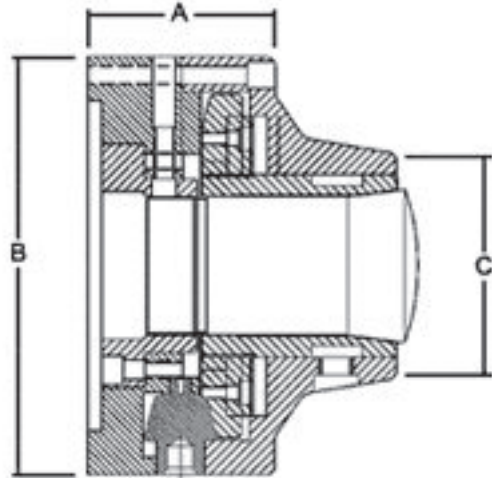
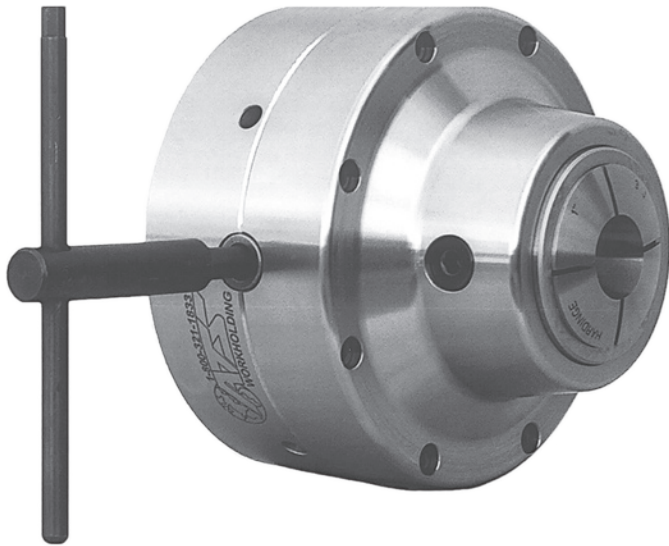
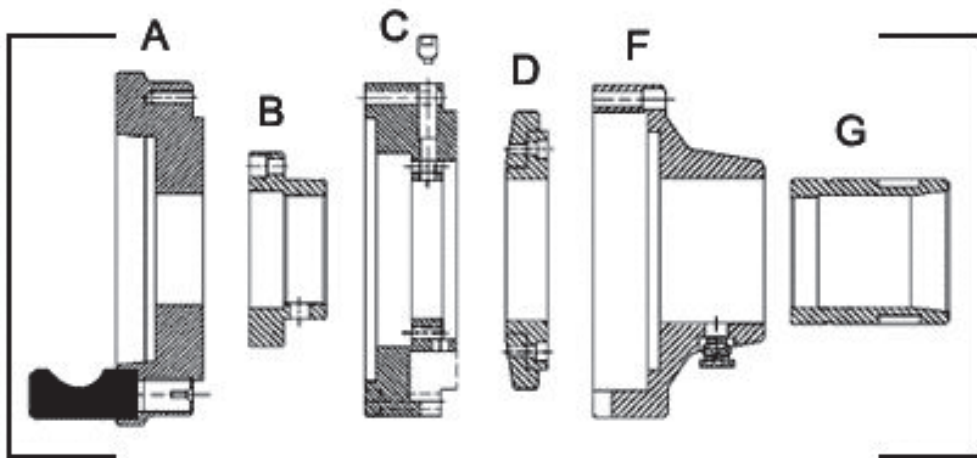


MANUAL TRUE LENGTH SCROLL COLLET CHUCK



- Ideal for holding thin walled parts
- True length for precise length control
- Available in 5C – 3J & 16C systems
- Easily adaptable to all spindle mounts
- Scroll and Pinion design for easy actuation
- Great for turning and milling (vertical & horizontal)



- A. Mounting Plate
- B. Collet Retainer
- C. Scroll Back Plate
- D. Inner Scroll
- F. Scroll Chuck Body
- G. Closing Sleeve

ROVI
PRODUCTS
INCORPORATED

4648 Runway Street • Simi Valley, CA 93063-3450
Toll Free (800) 423-5145 • In CA (805) 582-0165 • Fax (805) 582-1530
email: info@roviproducts.com • visit us at www.roviproducts.com

MANUAL TRUE LENGTH COLLET CHUCKS — C Style

Item#	Description	OAL		Flange		Nose		Capacity	
		Inch	Metric	Inch	Metric	Inch	Metric	Inch	Metric
5C - American Standard									
SC500-A5	A5-5C SCROLL TL	5.596	142.14	6.000	152.40	3.267	82.98	1.062	26.97
SC500-A6	A6-5C SCROLL TL	5.596	142.14	6.375	161.93				
SC500-A8	A8-5C SCROLL TL	5.806	147.47	9.000	228.60				
5C - Cam-Lock									
SC500A-D3	5C-D1-3 SCROLL TL	5.409	137.39	6.000	152.40	3.267	82.98	1.062	26.97
SC500A-D4	5C-D1-4 SCROLL TL	5.409	137.39	6.000	152.40				
SC500A-D5	5C-D1-5 SCROLL TL	5.596	142.14	6.000	152.40				
SC500A-D6	5C-D1-6 SCROLL TL	5.596	142.14	6.375	161.93				
SC500A-D8	5C-D1-8 SCROLL TL	5.806	147.47	9.000	228.60				
5C - Flat Nose									
SC500A-100	100MM-5C SCROLL TL	4.221	107.21	6.000	152.40	3.267	82.98	1.062	26.97
SC500A-110	110MM-5C SCROLL TL	4.221	107.21	6.000	152.40				
SC500A-140	140MM-5C SCROLL TL	4.221	107.21	6.375	161.93				
5C - Plain Back									
SC500A-S100	5C SCROLL TL	4.221	107.21	6.000	152.40	3.267	82.98	1.062	26.97
16C - American Standard									
SC160A5-S110	A5-16C SCROLL TL	6.415	162.94	6.000	152.40	3.267	82.98	1.625	41.28
SC160A6-S110	A6-16C SCROLL TL	6.415	162.94	6.375	161.93				
SC160A8-S110	A8-16C SCROLL TL	6.625	168.28	9.000	228.60				
16C - Cam-Lock									
SC160A-D3	16C-D1-3 SCROLL TL	6.228	158.19	6.000	152.40	3.267	82.98	1.625	41.28
SC160A-D4	16C-D1-4 SCROLL TL	6.228	158.19	6.000	152.40				
SC160A-D5	16C-D1-5 SCROLL TL	6.415	162.94	6.000	152.40				
SC160A-D6	16C-D1-6 SCROLL TL	6.415	162.94	6.375	161.93				
SC160A-D8	16C-D1-8 SCROLL TL	6.625	168.28	9.000	228.60				
16C - Flat Nose									
SC160A-100	100MM-16C SCROLL TL	5.040	128.02	6.000	152.40	3.267	82.98	1.625	41.28
SC160A-110	110MM-16C SCROLL TL	5.040	128.02	6.000	152.40				
SC160A-140	140MM-16C SCROLL TL	5.040	128.02	6.375	161.93				
16C - Plain Back									
SC160A-PB	16C SCROLL TL	5.040	128.02	6.000	152.40	3.267	82.98	1.625	41.28
3J - Cam-Lock									
SC300A-D3	3J-D1-3 SCROLL TL	5.663	143.84	6.000	152.40	3.267	82.98	1.750	44.45
SC300A-D4	3J-D1-4 SCROLL TL	5.663	143.84	6.000	152.40				
SC300A-D5	3J-D1-5 SCROLL TL	5.663	143.84	6.000	152.40				
SC300A-D6	3J-D1-6 SCROLL TL	5.663	143.84	6.375	161.93				
SC300A-D8	3J-D1-8 SCROLL TL	6.060	153.92	9.000	228.60				
3J - Flat Nose									
SC300A-100	100MM-3J SCROLL TL	4.475	113.67	6.000	152.40	3.267	82.98	1.750	44.45
SC300A-110	110MM-3J SCROLL TL	4.475	113.67	6.000	152.40				
SC300A-140	140MM-3J SCROLL TL	4.475	113.67	6.375	161.93				
3J - Plain Back									
SC300A-S115	3J SCROLL TL	4.475	113.67	6.000	152.40	3.267	82.98	1.750	44.45

F/N = 4.750 diameter uses (6) 1/4-20 bolts @ 5.480 BHC

3/8" Wrench Included

Customs Available, Call for Quote.